

bartosz

SQS
SOFTWARE QUALITY SYSTEMS

Things to consider before applying TTCN-3
There are two sides to the coin

ir. Erik Altena

Eindhoven, November 4th, 2009

SQS Nederland B.V. / Bartosz ICT B.V.

bartosz

ETSI

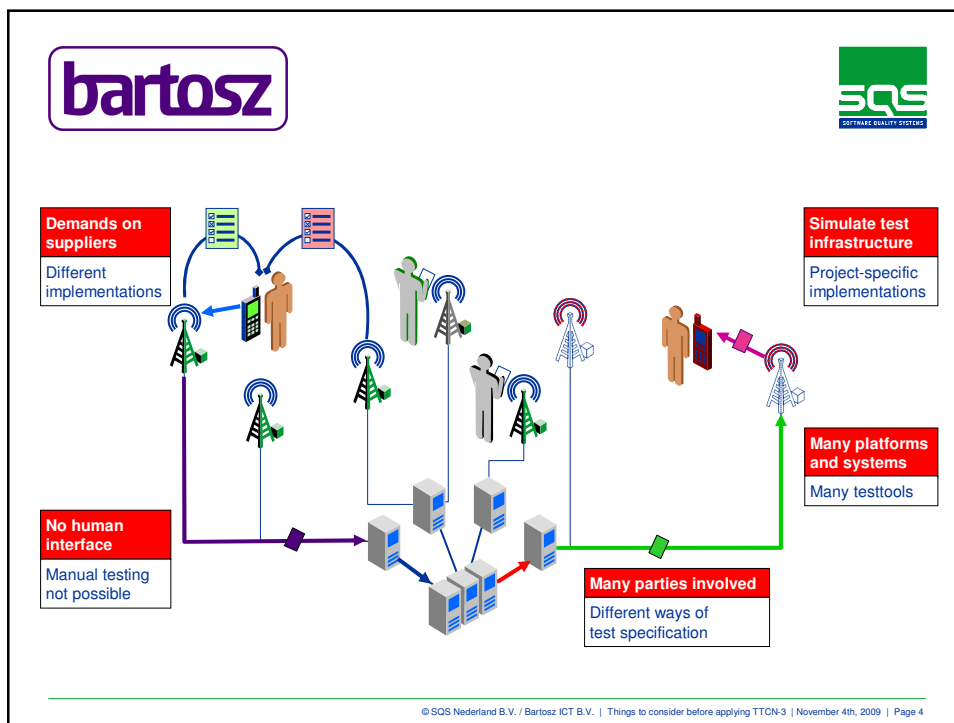
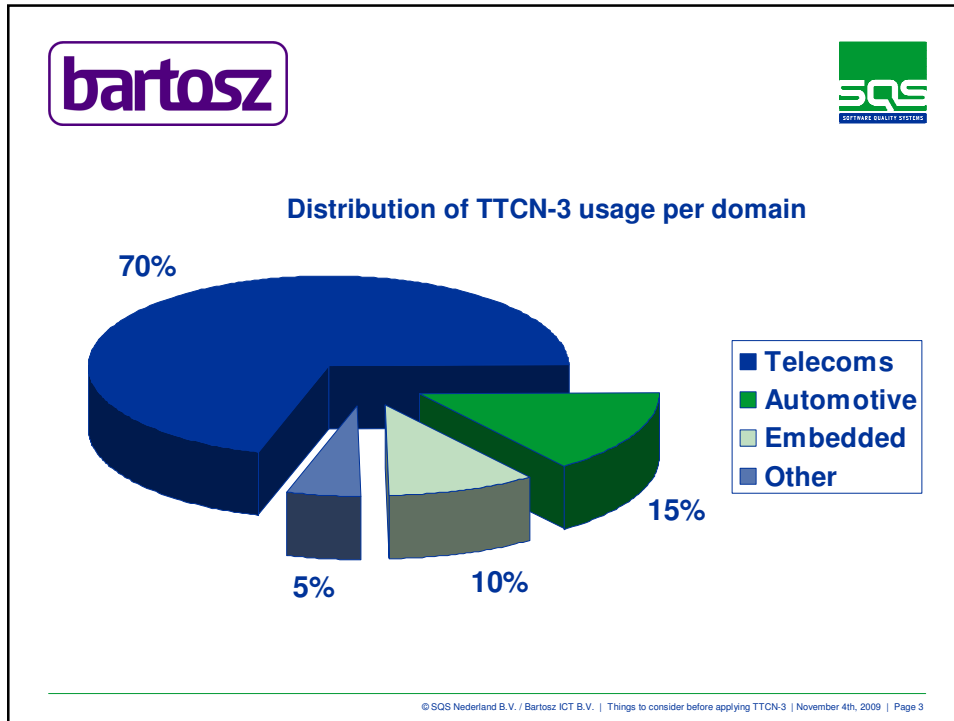
SQS
SOFTWARE QUALITY SYSTEMS

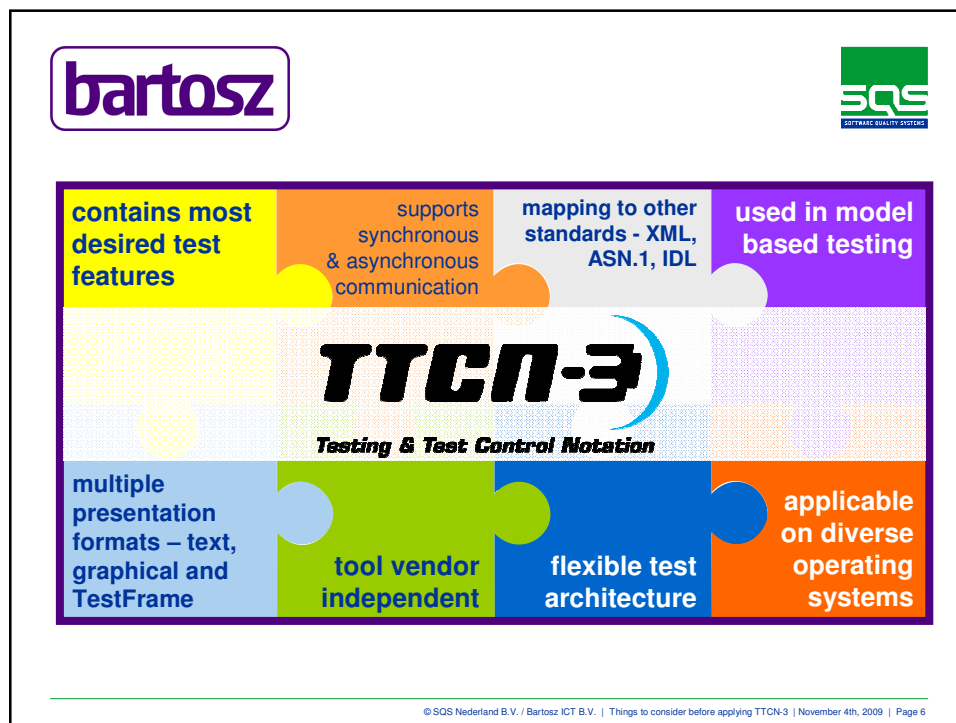
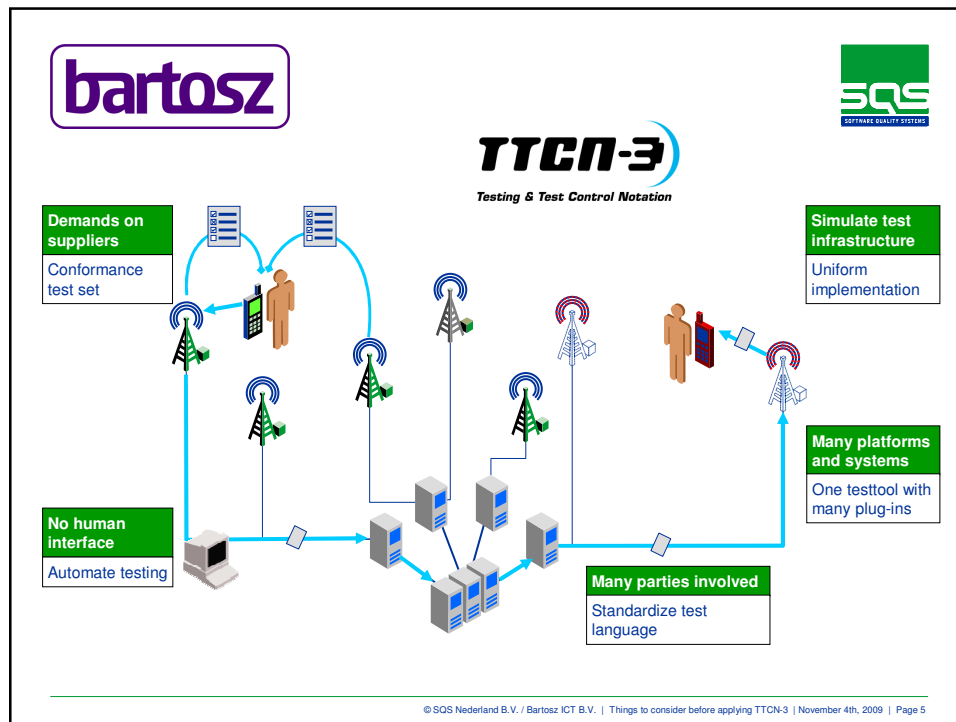
TTCN-3
Testing & Test Control Notation

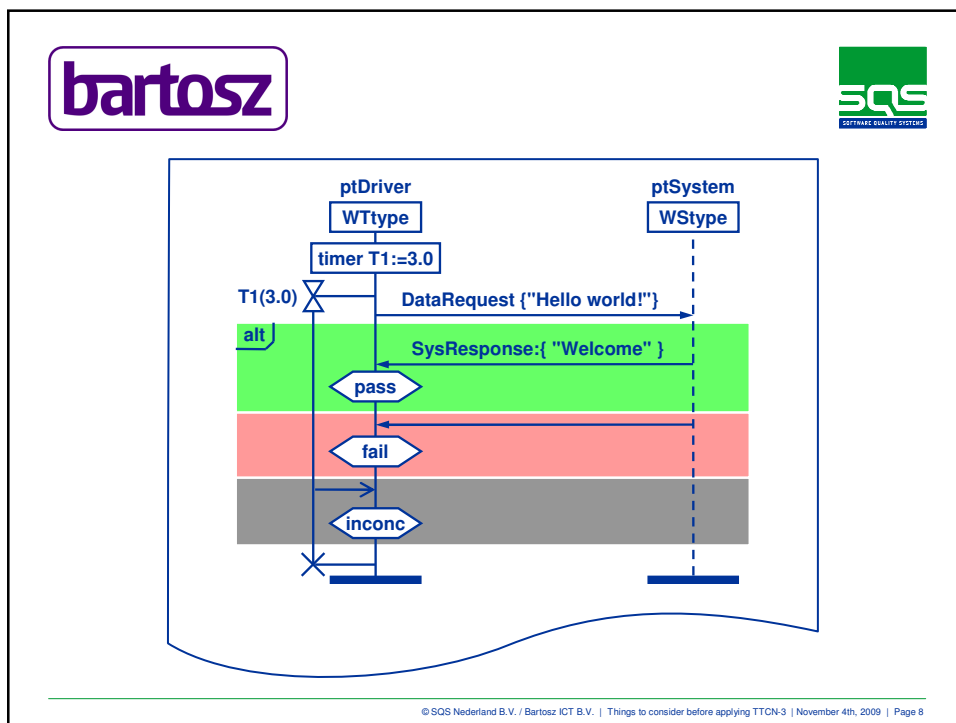
2009

1984


© SQS Nederland B.V. / Bartosz ICT B.V. | Things to consider before applying TTCN-3 | November 4th, 2009 | Page 2







bartosz



```


testcase FirstComm() runs on MTC {
  map (mtc:ptDriver, system:ptSystem);
  timer t1 := 3.0;
  t1.start;


  ptDriver.send ( DataRequest:"Hello world!" );

  alt {
    [] ptDriver.receive ( SysResponse:{ "Welcome" } ); {
      setverdict ( pass ); }
    [] ptDriver.receive {
      setverdict ( fail ); }
    [] t1.timeout {
      setverdict ( inconc ); }
  }
  t1.stop
  unmap (mtc:DriverPort, system:SystemPort);
}
    
```

© SQS Nederland B.V. / Bartosz ICT B.V. | Things to consider before applying TTCN-3 | November 4th, 2009 | Page 9

bartosz



One specification language	Execution tool	Multiple adapters
<div style="border: 1px solid blue; padding: 5px;"> <pre> testcase FirstComm() runs on MTC { map (mtc:ptDriver, system:ptSystem); timer t1 := 3.0; t1.start; ptDriver.send (DataRequest:"Hello world!"); alt { [] ptDriver.receive (SysResponse:{ "Welcome" }); { setverdict (pass); } [] ptDriver.receive { setverdict (fail); } [] t1.timeout { setverdict (inconc); } } t1.stop unmap (mtc:DriverPort, system:SystemPort); } </pre> </div>		<ul style="list-style-type: none"> ■ GSM ■ 3GPP ■ IPv6 ■ AUTOSAR ■ Translation ■ Unix ■ Linux ■ Windows

© SQS Nederland B.V. / Bartosz ICT B.V. | Things to consider before applying TTCN-3 | November 4th, 2009 | Page 10

bartosz 

One specification language	Execution tool	Multiple adapters
		

© SQS Nederland B.V. / Bartosz ICT B.V. | Things to consider before applying TTCN-3 | November 4th, 2009 | Page 11

bartosz 

Things to improve to widen TTCN-3 usage

	 	
<p>easier to use</p>	<p>support for files & databases</p>	<p>easier adapter development</p>

© SQS Nederland B.V. / Bartosz ICT B.V. | Things to consider before applying TTCN-3 | November 4th, 2009 | Page 12

Costs:

- Test tool
- Scripting
- Training
- Adapter(s)

Benefits:

- Faster
- Re-usable

© SQS Nederland B.V. / Bartosz ICT B.V. | Things to consider before applying TTCN-3 | November 4th, 2009 | Page 13


Costs:

- Reduction Total Cost of Ownership of test tools

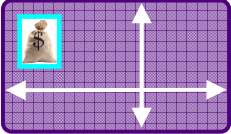
Benefits:


- Single Point of Contact
- Testing business processes


© SQS Nederland B.V. / Bartosz ICT B.V. | Things to consider before applying TTCN-3 | November 4th, 2009 | Page 14


bartosz 

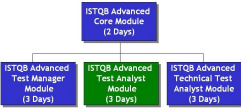
Things to consider *before* applying TTCN-3

 **organization and project size**

 **testing interfaces and protocols**

 **number of adapters needed**

 **number of current test tool vendors**

 **structured testing process**

© SQS Nederland B.V. / Bartosz ICT B.V. | Things to consider before applying TTCN-3 | November 4th, 2009 | Page 15

bartosz 



SQS Nederland / Bartosz ICT
Erik Altena / Jos van Rooyen

+31 (0) 6 404 66 303
www.linkedin.com/in/erikaltena

Thank you for your attention